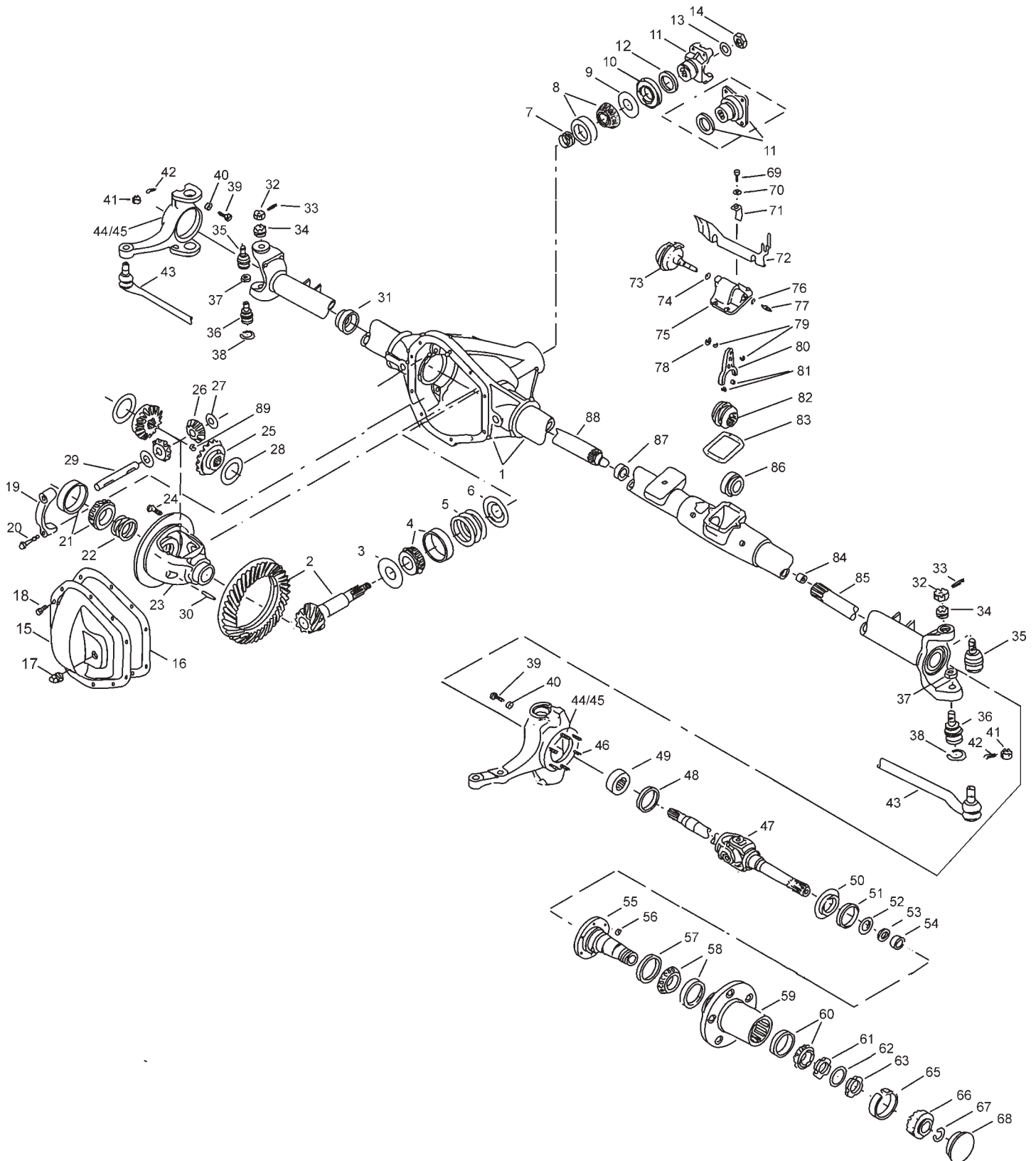


Dodge / Chrysler 1985-1993 1/2

**Model 44 /216 Disconnect
Front Axles for**

D-500, D-600, D-800

Dodge Model 44 /216 Disconnect Front Axles Exploded View



Dodge Model 44 /216 Disconnect Front Axles Parts Listing

ITEM NO.	PART NUMBER	DESCRIPTION	ITEM NO.	PART NUMBER	DESCRIPTION
1	— ⁽³⁾	Housing – Axle Service	44	— ⁽³⁾	Right Knuckle
2	— ⁽¹⁾	Drive Pinion & Gear Assembly	45	— ⁽³⁾	Left Knuckle
3	30764	Slinger – Inner Pinion Bearing	46	36326-1	Bolt – Knuckle
4	706031X	KIT – Inner Pinion Bearing	47	— ⁽¹⁾	Shaft & Joint Assembly
	706358X	PKG – Pinion Bearing Shim (inc items 5, 7, 12, 13, 16)	48	— ⁽²⁾	Oil Seal (left side)
	706376X	PKG – Diff & Pinion Bearing Shim (inc items 5, 7, 12, 13, 16, 22)	49	— ⁽²⁾	Bearing (left side)
5	— ⁽⁴⁾	Inner Pinion Shims (see shim packages)	50	36364	Slinger – Outer Shaft
6	30765	Baffle - Pinion Bearing		706570X	KIT – Spindle (RH, inc items 51-55)
7	— ⁽⁴⁾	Outer Pinion Shims (see shim packages)	51	— ⁽²⁾	KIT – Spindle (LH, inc items 51-55)
8	706030X	KIT – Outer Pinion Bearing	52	706527X	KIT – Spindle Seal & Bearing (inc items 51, 52, 53, 54)
9	13575	Slinger – Outer Pinion Bearing	53	38128	Oil Seal
10	39118	Seal – Pinion Oil	54	36361	Oil Seal (block-vee)
11	— ⁽³⁾	End Yoke/Companion Flange	55	38106	Spacer – Wheel Bearing Spindle
12	— ⁽³⁾	Slinger – End Yoke	56	550759	Needle Bearing Assembly
13	30186	Washer – Pinion Nut	57	— ⁽²⁾	Oil Seal Retainer
14	30185	Pinion Nut	58	38428	Spindle
	707014X	KIT – Carrier Cover (inc 15,16,17,18)	59	35704	Brake Mounting Nut
15	41545	Cover & Clip Assembly – Carrier	60	40709	Oil Seal
16	34685	Gasket – Carrier Cover	61	— ⁽³⁾	KIT – Inner Wheel Bearing
	38615	RTV Silicone Sealant	62	— ⁽³⁾	Wheel Hub
17	36472	Plug – Carrier Cover	63	— ⁽³⁾	KIT – Outer Wheel Bearing
18	34279	Bolt – Carrier Cover (qty 10)	64	21588X	Nut & Pin Assembly
19	— ⁽³⁾	Differential Bearing Cap	65	36569	Lock Nut
20	48632-1	Bolt – Differential Bearing Cap	66	31139	Nut – Wheel Bearing Adjusting
21	706032X	KIT – Differential Bearing	67	— ⁽²⁾	Spacer – Drive Gear
22	706086X	PKG – Diff Bearing Shim (inc 16)	68	42667	Axle Drive Gear
23	— ⁽¹⁾	Case – Differential	69	31624	Snap Ring
24	41221	Bolt – Drive Gear (qty 10)	70	44328	Hub Cap
25	40194	Gear – Differential	71	500396-10	Cap Screw
26	17717	Pinion – Differential	72	500357-9	Lockwasher
27	13338-3	Thrustwasher – Differential Pinion	73	41594	Brake Line Clip
28	40196	Thrustwasher – Differential Gear	74	42206	Protection Shield
29	39194	Shaft – Differential	75	— ⁽²⁾	Motor Assembly
30	13449	Lock – Differential Shaft	76	620980	O-Ring
31	620216	Seal – Tube (right side)	77	42208	Cover – Disconnect Housing
	706116X	KIT – Socket Assembly (inc 32, 33, 34, 35, 36, 37, 38)	78	44476	O-Ring
32	44101	Nut – Hex Slotted	79	— ⁽²⁾	Switch Assembly
33	500024-6	Cotter Pin	80	621097	Snap Ring
34	35417	Adjusting Split Ring	81	620979	Snap Ring
35	40112	Socket Assembly – Upper	82	41553	Shift Fork
36	40113	Socket Assembly – Lower		— ⁽²⁾	KIT – Cover and Motor Assembly (inc 73, 74, 75, 76, 77, 78, 79, 80)
37	35566	Lock Nut	83	621059	Clip – Shift Fork
38	35928	Snap Ring	84	42998	Clutch Collar
39	— ⁽²⁾	Stop Screw		706824X	KIT – Shift Clip (inc 69, 70, 81, 83)
40	500381-3	Jam Nut	85	41494	Gasket
41	— ⁽⁵⁾	Nut – Hex Slotted	86	565985	Bushing / Bearing
42	— ⁽⁵⁾	Cotter Pin	87	— ⁽²⁾	Inner Yoke Shaft (left side)
43	— ⁽⁵⁾	Tie Rod Assembly	88	— ⁽²⁾	Seal – Tube (left side)
	— ⁽²⁾	KIT – Steering Arm	89	566008	Bushing / Bearing
				75265X	KIT – Axle Shaft (output)
				42570	Snap Ring – Inner Shaft (if required)

(1) See "Bill of Material Table" on next page

(2) See "Variable Parts Table" within this section

(3) Contact Vehicle Manufacturer

(4) Not Sold Separately

(5) See Spicer Chassis Catalog for part number and additional steering parts

Dodge Model 44 /216 Disconnect Front Axles

Bill of Material Table

Axle			Axle Kits				Shaft & Joint Assy.	
Bill of Material	Diff. Type	Ratio	Ring Gear & Pinion Kit ⁽⁷⁾	Differential			Right Hand Shaft Assy.	Left Hand Shaft Assy.
				Case Assy. Kit ⁽⁸⁾	Case Kit	Inner Parts Kit		
1985-86 D-500 & D-800								
610216-2	Standard	3.23	707020-2X	707021X	707023X	707025X	660599-1	72467-1X
610216-3	Standard	3.54	707020-3X	707021X	707023X	707025X	660599-1	72467-1X
1985-86 D-600								
610217-1	Standard	3.54	707020-3X	707021X	707023X	707025X	660599-3	72467-2X
610217-2	Standard	4.09	707020-4X	707022X	707024X	707025X	660599-3	72467-2X
1986-87 1/2 D-600								
610258-1	Standard	3.54	707020-3X	707021X	707023X	707025X	660599-3	72467-2X
610258-2	Standard	4.09	707020-4X	707022X	707024X	707025X	660599-3	72467-2X
1986 1/2-87 1/2 D-500 & D-800								
610257-1	Standard	3.23	707020-2X	707021X	707023X	707025X	660599-1	72467-1X
610257-2	Standard	3.54	707020-3X	707021X	707023X	707025X	660599-1	72467-1X
1988-88 1/2 D-500 & D-800								
610277-1	Standard	3.23	707020-2X	707021X	707023X	707025X	660599-1	73578-1X
610277-2	Standard	3.54	707020-3X	707021X	707023X	707025X	660599-1	73578-1X
610329-1	Standard	3.23	707020-2X	707021X	707023X	707025X	660599-1	73578-1X
610329-2	Standard	3.54	707020-3X	707021X	707023X	707025X	660599-1	73578-1X
610329-3	Standard	3.92	707020-5X	707022X	707024X	707025X	660599-1	73578-1X
1988-88 1/2 D-600								
610278-1	Standard	3.54	707020-3X	707021X	707023X	707025X	660599-3	73578-2X
610278-2	Standard	4.09	707020-4X	707022X	707024X	707025X	660599-3	73578-2X
1989-90 D-600								
610331-1	Standard	3.54	707020-3X	707021X	707023X	707025X	660599-3	73578-2X
610331-2	Standard	4.09	707020-4X	707022X	707024X	707025X	660599-3	73578-2X
610331-3	Standard	3.92	707020-5X	707022X	707024X	707025X	660599-3	73578-2X
1990-91 1/2 D-500 & D-800								
610355-1	Standard	3.23	707020-2X	707021X	707023X	707025X	660599-1	73578-1X
610355-2	Standard	3.54	707020-3X	707021X	707023X	707025X	660599-1	73578-1X
610355-3	Standard	3.92	707020-5X	707022X	707024X	707025X	660599-1	73578-1X
1991-91 1/2 D-600								
610356-1	Standard	3.54	707020-3X	707021X	707023X	707025X	660599-3	73578-2X
610356-2	Standard	4.09	707020-4X	707022X	707024X	707025X	660599-3	73578-2X
610356-3	Standard	3.92	707020-5X	707022X	707024X	707025X	660599-3	73578-2X
610360-2	Standard	3.54	707020-3X	707021X	707023X	707025X	74236-1X	74225-1X
1992-93 1/2 D-600 & D-800								
610270-1	Standard	3.23	707020-2X	707021X	707023X	707025X	660599-1	73578-1X
610270-2	Standard	3.54	707020-3X	707021X	707023X	707025X	660599-1	73578-1X
610270-3	Standard	3.92	707020-5X	707022X	707024X	707025X	660599-1	73578-1X
1992-93 1/2 D-600								
610271-1	Standard	3.54	707020-3X	707021X	707023X	707025X	660599-3	73578-2X
610271-2	Standard	4.09	707020-4X	707022X	707024X	707025X	660599-3	73578-2X
610271-3	Standard	3.92	707020-5X	707022X	707024X	707025X	660599-3	73578-2X

(7) See Ring Gear & Pinion Kits in XGI Catalog for ratio & tooth combinations.

(8) See Differential Case Assy Kits in XGI Catalog for spline data & ratios.

Dodge Model 44 /216 Disconnect Front Axles Variable Parts Listing

Kits & Parts - Use With All Applications							
Description & Item Number (Refer to "Exploded View" at the front of this section)			Bills of Material				
			610216	610217	610257	610258	610270
1	Stop Screw	39	31026-1	31026-1	31026-2	31026-2	620143-2
2	KIT – Steering Arm	-	706184X	706184X	706184X	706184X	707265X
3	Oil Seal (left side)	48	40191	40191	40191	40191	—
4	Bearing (left side)	49	565983	565983	565983	565983	—
5	KIT – Spindle (LH, inc items 51-55)	-	707013X ⁽⁹⁾	707013X ⁽⁹⁾	707013X ⁽⁹⁾	707013X ⁽⁹⁾	706570X
6	Oil Seal Retainer	-	40608	40608	40608	40608	—
7	Spacer – Drive Gear	65	41606	41606	41606	41606	41606
8	Motor Assembly	73	41330	41330	41330	41330	43429
9	Switch Assembly	77	41378	41378	41378	41378	42742
10	KIT – Cover and Motor Assembly	-	73004X	73004X	73004X	73004X	73764X
11	Inner Yoke Shaft (left side)	85	72706-3X	72706-4X	72706-3X	72706-4X	73579-1X
12	Seal – Tube (left side)	86	—	—	—	—	43154
			610271	610277	610278	610329	610331
1	Stop Screw	39	620143	31026-2	31026-2	31026-2	31026-2
2	KIT – Steering Arm	-	707265X	706184X	706184X	706184X	706184X
3	Oil Seal (left side)	48	—	—	—	—	—
4	Bearing (left side)	49	—	—	—	—	—
5	KIT – Spindle (LH, inc items 51-55)	-	706570X	706570X	706570X	706570X	706570X
6	Oil Seal Retainer	-	—	—	—	—	—
7	Spacer – Drive Gear	65	41606	41606	41606	41606	41606
8	Motor Assembly	73	43429	41330	41330	43429	43429
9	Switch Assembly	77	42742	42742	42742	42742	42742
10	KIT – Cover and Motor Assembly	-	73764X	73540X	73540X	73764X	73764X
11	Inner Yoke Shaft (left side)	85	73579-2X	73579-1X	73579-2X	73579-1X	73579-2X
12	Seal – Tube (left side)	86	43154	43154	43154	43154	43154
			610355	610356	610360		
1	Stop Screw	39	620143-2	620143-2	31026-2		
2	KIT – Steering Arm	-	706184X	706184X	706850X		
3	Oil Seal (left side)	48	—	—	—		
4	Bearing (left side)	49	—	—	—		
5	KIT – Spindle (LH, inc items 51-55)	-	706570X	706570X	706570X		
6	Oil Seal Retainer	-	—	—	—		
7	Spacer – Drive Gear	65	41606	41606	—		
8	Motor Assembly	73	43429	43429	43429		
9	Switch Assembly	77	42742	42742	42742		
10	KIT – Cover and Motor Assembly	-	73764X	73764X	73764X		
11	Inner Yoke Shaft (left side)	85	73579-1X	73579-2X	72706-1X		
12	Seal – Tube (left side)	86	43154	43154	43154		

(9) 707013X uses an oil seal retainer instead of a needle bearing.