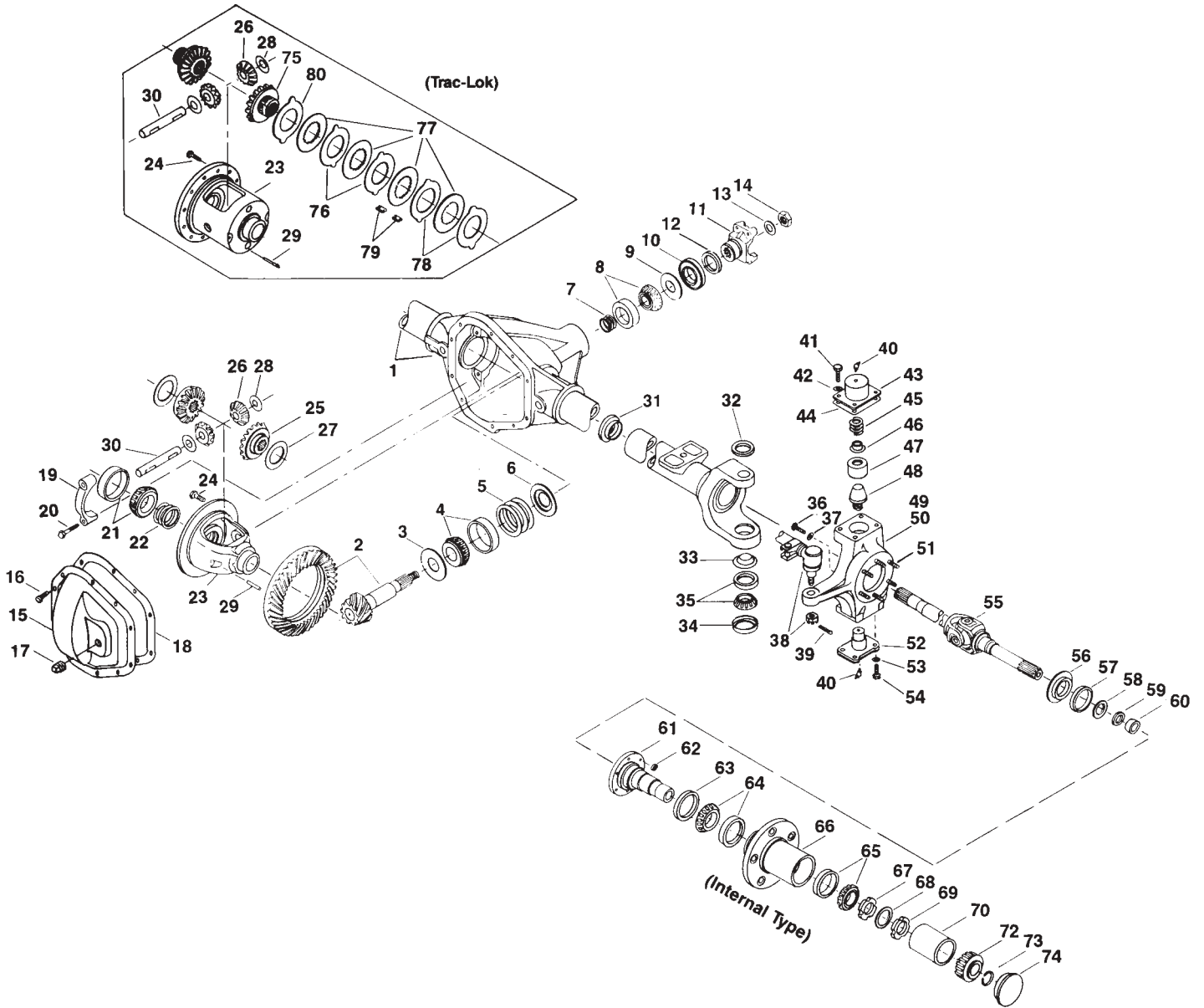


**GM / Chevrolet 1979-1991 1/2**  
**Model 60 /248 Front Axles for**  
**CUCV, K-30 and V-30**

# GM Model 60 /248 Front Axles Exploded View



# GM Model 60 /248 Front Axles Parts Listing

ITEM NO.	PART NUMBER	DESCRIPTION	ITEM NO.	PART NUMBER	DESCRIPTION
1	— <sup>(3)</sup>	Housing – Axle Service	41	30875	Nut – Hex Tapered
2	— <sup>(1)</sup>	Drive Pinion & Gear Assembly	42	—	Lockwasher (King Pin Cap – Upper)
3	34643 <sup>(5)</sup>	Slinger – Inner Pinion Bearing	43	38139	Steering Arm (LH only)
4	706046X	KIT – Inner Pinion Bearing		620132	King Pin Cap – Upper (RH only)
5	—	Inner Pinion Bearing Shims (see shim packages)	44	37307	Gasket – King Pin Cap
	706375X	PKG – Diff & Pinion Bearing Shim (inc items 4, 6, 13, 18, 22)	45	37300	Spring – Pressure
6	30982 <sup>(5)</sup>	Baffle – Pinion Bearing	46	620180	Spring Retainer
	706359X	PKG – Pinion Bearing Shim (inc items 4, 6, 13, 18)	47	41886	Bushing – King Pin
	—	Outer Pinion Bearing Shims (see shim packages)	48	37302	King Pin
7	—	Outer Pinion Bearing Shims (see shim packages)	49	41893	KIT – Right Knuckle Assy (49, 51)
8	706045X	KIT – Outer Pinion Bearing	50	41894	KIT – Left Knuckle Assy (50, 51)
9	42737	Thrustwasher – Bearing	51	37879	Right Knuckle
10	42449	Seal – Pinion Oil	52	37299	Left Knuckle
11	2-4-3801-1X	End Yoke Assembly (inc 12) Bearing strap kit used w/end yoke	53	500357-13	Bolt – Hex
12	34592	Slinger – End Yoke	54	500412-13	King Pin Bearing Cap – Lower
13	30275	Washer – Pinion Nut	55	— <sup>(1)</sup>	Lockwasher (King Pin Cap – Lower)
14	30271	Pinion Nut	56	37308	Bolt – Hex (King Pin Cap – Lower)
	— <sup>(2)</sup>	KIT – Carrier Cover (inc items 15, 16, 17)		700014	Shaft & Joint Assembly
15	— <sup>(2)</sup>	Carrier Cover		— <sup>(2)</sup>	Slinger – Spindle Yoke
16	34822	Bolt – Carrier Cover (qty 10)	57	37311	KIT – Spindle Seal & Bearing (inc items 57, 58, 59, 60)
17	— <sup>(2)</sup>	Plug – Carrier Cover	58	37312	KIT – Spindle (inc items 57, 58, 59, 60, 61)
18	34687	Gasket – Carrier Cover	59	620062	Oil Seal
19	—	Differential Bearing Cap	60	620063	Spacer – Wheel Bearing Spindle
20	48632-1	Bolt – Differential Bearing Cap	61	— <sup>(2)</sup>	Oil Seal (Block-Vee)
21	706047X	KIT – Differential Bearing	62	36880	Needle Bearing Assembly
22	706378X	PKG – Diff Differential Shim (inc 18)	63	48816	Spindle – Wheel Bearing
23	— <sup>(4)</sup>	Case – Differential	64	706411X	Nut – Brake Mounting
24	30266	Bolt – Drive Gear (qty 12)	65	706074X	Oil Seal
25	35625	Gear – Differential (std)	66	— <sup>(3)</sup>	KIT – Inner Wheel Bearing
26	34367	Pinion – Differential	67	— <sup>(2)</sup>	KIT – Outer Wheel Bearing
27	34729	Thrustwasher – Diff Gear (std)	68	— <sup>(2)</sup>	Wheel Hub
28	34730	Thrustwasher – Diff Pinion (std)	69	— <sup>(2)</sup>	Nut & Pin Assembly
29	44810	Lock – Differential Shaft	70	— <sup>(2)</sup>	Lockwasher – Wheel Bearing Nut
30	30263	Shaft – Differential	71	— <sup>(2)</sup>	Spindle Nut
31	36487	Seal & Guide Tube	72	37730	Spacer
	706395X	KIT – King Pin Parts (inc items 32, 33, 34, 35)	73	— <sup>(2)</sup>	Gear – Axle Drive
32	620058	King Pin Seal – Upper	N.I.	—	Snap Ring
33	37305	Grease Retainer		— <sup>(2)</sup>	Hub Cap
34	706150X	KIT – King Pin Bearing – Lower		— <sup>(3)</sup>	Key – Square
35	41777	Oil Seal		35830	Hub Lock Assembly
36	31026-1	Stop Screw	75	707083X	Gear – Differential (t/l)
37	500381-3	Jam Nut			KIT – Differential Plate & Disc (t/l) (inc items 76, 77, 78, 79, 80)
38	— <sup>(3)</sup>	Tie Rod Assembly	76	— <sup>(4)</sup>	Plate – Differential Pressure
39	— <sup>(3)</sup>	Cotter Pin	77	— <sup>(4)</sup>	Disc – Differential
40	500175-1	Lube Fitting	78	— <sup>(4)</sup>	Plate – Differential
			79	40835	Clip – Differential Clutch
			80	— <sup>(4)</sup>	Spacer – Plate Preload

(1) See "Bill of Material Table" on next page

(2) See "Variable Parts Table" within this section

(3) Contact Vehicle Manufacturer

(4) Not Sold Separately

(5) Inner Slinger &amp; Pinion Baffle may be included in Ring &amp; Pinion Kit. Use only if axle being rebuilt has them also.

# GM Model 60 /248 Front Axles

## Bill of Material Table

Axle			Axle Kits				Shaft & Joint Assy.	
Bill of Material	Diff. Type	Ratio	Ring Gear & Pinion Kit <sup>(7)</sup>	Differential			Right Hand Shaft Assy.	Left Hand Shaft Assy.
				Case Assy. Kit <sup>(8)</sup>	Case Kit	Inner Parts Kit		
<b>1979-80 K-30</b>								
610057-1	Standard	4.10	706033-3X	706180X	706040X	706702X	907967-5	907967-6
610057-2	Standard	4.10	706033-3X	706180X	706040X	706702X	907967-5	907967-6
610057-3	Standard	4.56	706033-4X	706182X	706041X	706702X	907967-5	907967-6
610057-4	Standard	4.56	706033-4X	706182X	706041X	706702X	907967-5	907967-6
610057-5	Standard	4.10	706033-3X	706180X	706040X	706702X	907967-5	907967-6
610057-7	Standard	4.56	706033-4X	706182X	706041X	706702X	907967-5	907967-6
610057-8	Standard	4.10	706033-3X	706180X	706040X	706702X	907967-5	907967-6
<b>1981 K-30</b>								
610132-1	Standard	4.10	706033-3X	706180X	706040X	706702X	907967-5	907967-6
610132-2	Standard	4.56	706033-4X	706182X	706041X	706702X	907967-5	907967-6
610132-3	Standard	4.10	706033-3X	706180X	706040X	706702X	907967-5	907967-6
610132-4	Standard	4.56	706033-4X	706182X	706041X	706702X	907967-5	907967-6
610132-5	Standard	3.73	706033-2X	706180X	706040X	706702X	907967-5	907967-6
610132-6	Standard	3.73	706033-2X	706180X	706040X	706702X	907967-5	907967-6
<b>1982-87 K-30</b>								
610159-1	Standard	4.10	706033-3X	706180X	706040X	706702X	907967-5	907967-6
610159-2	Standard	4.56	706033-4X	706182X	706041X	706702X	907967-5	907967-6
610159-3	Standard	4.10	706033-3X	706180X	706040X	706702X	907967-5	907967-6
610159-4	Standard	4.56	706033-4X	706182X	706041X	706702X	907967-5	907967-6
610159-5	Standard	3.73	706033-2X	706180X	706040X	706702X	907967-5	907967-6
610159-6	Standard	3.73	706033-2X	706180X	706040X	706702X	907967-5	907967-6
<b>1984-85 K-30</b>								
610202-1	Standard	3.73	706033-2X	706180X	706040X	706702X	907967-5	907967-6
610202-2	Standard	3.73	706033-2X	706180X	706040X	706702X	907967-5	907967-6
610202-3	Standard	4.10	706033-3X	706180X	706040X	706702X	907967-5	907967-6
610202-4	Standard	4.10	706033-3X	706180X	706040X	706702X	907967-5	907967-6
610202-5	Standard	4.56	706033-4X	706182X	706041X	706702X	907967-5	907967-6
610202-6	Standard	4.56	706033-4X	706182X	706041X	706702X	907967-5	907967-6
<b>1984-88 CUCV</b>								
610201-1	Standard	4.56	706033-4X	706182X	706041X	706702X	907967-5	907967-6
610201-2	Trac Lok	4.56	706033-4X	707097-4X	706039X	707086X	907967-5	907967-6
<b>1988-91 1/2 V-30</b>								
610295-1	Standard	4.10	706033-3X	706180X	706040X	706702X	907967-5	907967-6
610295-2	Standard	4.56	706033-4X	706182X	706041X	706702X	907967-5	907967-6
610295-3	Standard	4.10	706033-3X	706180X	706040X	706702X	907967-5	907967-6
610295-4	Standard	4.56	706033-4X	706182X	706041X	706702X	907967-5	907967-6
610295-5	Standard	3.73	706033-2X	706180X	706040X	706702X	907967-5	907967-6
610295-6	Standard	3.73	706033-2X	706180X	706040X	706702X	907967-5	907967-6

(7) See Ring Gear & Pinion Kits in XGI Catalog for ratio & tooth combinations.  
(8) See Differential Case Assy Kits in XGI Catalog for spline data & ratios.

# GM Model 60 /248 Front Axles Variable Parts Listing

Kits & Parts - Use With All Applications							
Description & Item Number (Refer to "Exploded View" at the front of this section)			Bills of Material				
			610057	610132	610159	610201	610202
1	KIT – Carrier Cover	-	706128X	707233X	707233X	706968X	707233X
2	Carrier Cover	15	34675	43600-1	43600-1	43797	43600-1
3	Plug – Carrier Cover	17	36472	43180	43180	43180	43180
4	KIT – Spindle	-	700013	700013	700013	706979X	706979X
5	Spindle – Wheel Bearing	61	620061	620061	620061	40950	40950
6	Nut & Pin Assembly	67	—	—	660568	660568	—
7	Lockwasher – Wheel Bearing Nut	68	33733	33733	621028	621028	—
8	Spindle Nut	69	33732	33732	621027	621027	40951
9	Spacer	70	37997	37997	—	—	—
10	Gear – Axle Drive	71	37994	37994	—	—	—
11	Hub Cap	73	37996	—	—	—	—
			<b>610295</b>				
1	KIT – Carrier Cover	-	707233X				
2	Carrier Cover	15	43600-1				
3	Plug – Carrier Cover	17	43180				
4	KIT – Spindle	-	700013				
5	Spindle – Wheel Bearing	61	620061				
6	Nut & Pin Assembly	67	660568				
7	Lockwasher – Wheel Bearing Nut	68	621028				
8	Spindle Nut	69	621027				
9	Spacer	70	—				
10	Gear – Axle Drive	71	—				
11	Hub Cap	73	—				