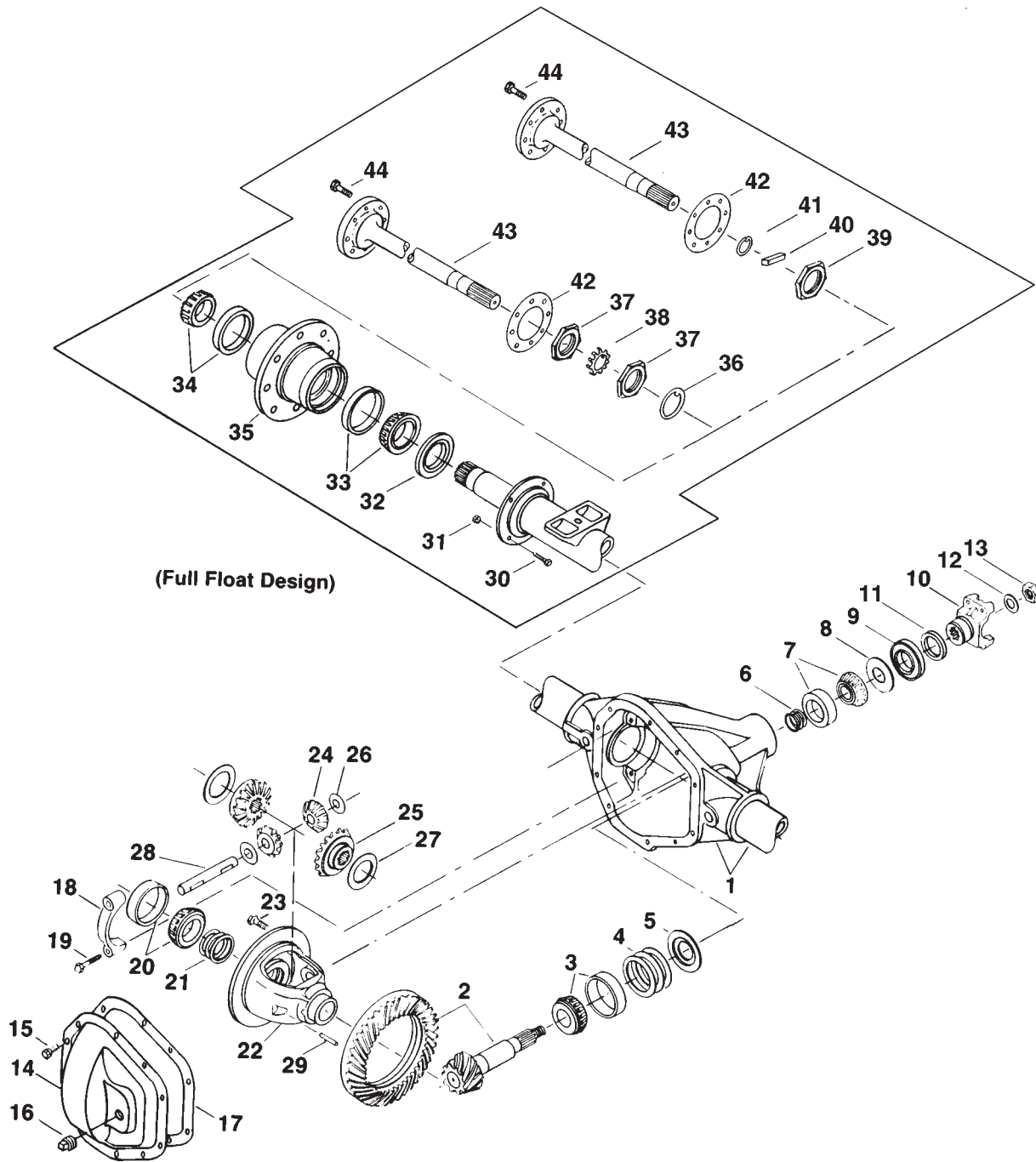


GM / Chevrolet 1979-1991 1/2

Model 60 /248 Rear Axles for

G-Van

GM Model 60 /248 Rear Axles Exploded View



GM Model 60 /248 Rear Axles Parts Listing

ITEM NO.	PART NUMBER	DESCRIPTION	ITEM NO.	PART NUMBER	DESCRIPTION
1	— ⁽³⁾	Housing – Axle Service	19	48632-1	Bolt – Differential Bearing Cap
2	— ⁽¹⁾	Drive Pinion & Gear Assembly	20	706047X	KIT – Differential Bearing
3	706046X	KIT – Inner Pinion Bearing	21	706378X	PKG – Diff Bearing Shim (inc 17)
	706375X	PKG – Diff & Pinion Bearing Shim (inc items 4, 6, 12, 13, 17, 21)	22	— ⁽⁴⁾	Case – Differential (std)
	706359X	PKG – Pinion Bearing Shim (inc items 4, 6, 12, 13, 17)	23	40638	Bolt – Drive Gear (qty 12)
4	—	Inner Pinion Bearing Shims (see shim packages)	24	34367	Pinion – Differential (std)
5	30982	Baffle – Pinion Bearing	25	35625	Gear – Differential (std)
6	—	Outer Pinion Bearing Shims (see shim packages)	26	34730	Thrustwasher – Diff Pinion (std)
7	706045X	KIT – Outer Pinion Bearing	27	34729	Thrustwasher – Diff Gear (std)
8	42737	Thrustwasher	28	30263	Shaft – Differential (std)
9	42449	Seal – Pinion Oil	29	44810	Lock – Differential Shaft
10	3-4-5731-1X	End Yoke Assembly (inc 11) Bearing strap kit used w/end yoke	30	— ⁽³⁾	Bolt – Brake Mounting
11	232752	Slinger – End Yoke	31	— ⁽³⁾	Nut – Brake Mounting
12	30275	Washer – Pinion Nut	32	— ⁽³⁾	Hub Seal
13	30271	Pinion Nut	33	706179X	KIT – Inner Wheel Bearing
	— ⁽²⁾	KIT – Carrier Cover (inc items 14, 15, 16)	34	706074X	KIT – Outer Wheel Bearing
14	— ⁽²⁾	Carrier Cover	35	— ⁽³⁾	Wheel Hub
15	34822	Bolt – Carrier Cover	36	— ⁽²⁾	Thrustwasher – Wheel Bearing
16	— ⁽²⁾	Plug – Carrier Cover	37	— ⁽²⁾	Spindle Nut
17	34687	Gasket	38	— ⁽²⁾	Lockwasher – Wheel Bearing
18	— ⁽³⁾	Differential Bearing Cap	39	— ⁽³⁾	Spindle Nut
			40	— ⁽³⁾	Key – Square
			41	— ⁽³⁾	Snap Ring
			42	36554	Gasket
			43	— ⁽¹⁾	Axle Shaft
			44	37871	Bolt – Axle Shaft

(1) See "Bill of Material Table" on next page

(2) See "Variable Parts Table" below

(3) Contact Vehicle Manufacturer

(4) Not Sold Separately

Variable Parts Listing

Kits & Parts - Use With All Applications						
Description & Item Number (Refer to "Exploded View" on previous page)			Bills of Material			
			603702 603884	605000 605001	605132 605133 605200	605201 605268 605403 605405 605495 605496
1	KIT – Carrier Cover	-	706128X	707108X	707233X	707108X
2	Carrier Cover	14	34675	42799-2	43600-1	42799-2
3	Plug – Carrier Cover	16	36472	43180	43180	43180
4	Thrustwasher – Wheel Bearing	36	33734	—	—	—
5	Spindle Nut	37	33732	—	—	—
6	Lockwasher – Wheel Bearing	38	33733	—	—	—

GM Model 60 /248 Rear Axles

Bill of Material Table

Axle			Axle Kits				Shaft & Joint Assy.	
Bill of Material	Diff. Type	Ratio	Ring Gear & Pinion Kit ⁽⁷⁾	Differential			Right Hand Shaft Assy.	Left Hand Shaft Assy.
				Case Assy. Kit ⁽⁸⁾	Case Kit	Inner Parts Kit		
1979 DRW G-Van 125" WB - Full Float								
603884-1	Standard	4.56	706033-4X	706182X	706041X	706702X	41100-1	41100-1
603884-2	Standard	4.10	706033-3X	706180X	706040X	706702X	41100-1	41100-1
1979 DRW G-Van 146" WB - Full Float								
603702-1	Standard	4.56	706033-4X	706182X	706041X	706702X	41100-1	41100-1
603702-2	Standard	4.10	706033-3X	706180X	706040X	706702X	41100-1	41100-1
1980-82 DRW G-Van 125" WB - Full Float								
605000-1	Standard	4.56	706033-4X	706182X	706041X	706702X	41100-1	41100-1
605000-2	Standard	4.10	706033-3X	706180X	706040X	706702X	41100-1	41100-1
605000-3	Standard	4.10	706033-3X	706180X	706040X	706702X	41100-1	41100-1
605000-4	Standard	4.56	706033-4X	706182X	706041X	706702X	41100-1	41100-1
605000-5	Standard	4.10	706033-3X	706180X	706040X	706702X	41100-1	41100-1
605000-6	Standard	4.56	706033-4X	706182X	706041X	706702X	41100-1	41100-1
1980-82 DRW G-Van 146" WB - Full Float								
605001-1	Standard	4.56	706033-4X	706182X	706041X	706702X	41100-1	41100-1
605001-2	Standard	4.10	706033-3X	706180X	706040X	706702X	41100-1	41100-1
605001-3	Standard	4.10	706033-3X	706180X	706040X	706702X	41100-1	41100-1
605001-4	Standard	4.56	706033-4X	706182X	706041X	706702X	41100-1	41100-1
605001-5	Standard	4.10	706033-3X	706180X	706040X	706702X	41100-1	41100-1
605001-6	Standard	4.56	706033-4X	706182X	706041X	706702X	41100-1	41100-1
1983 DRW G-Van 125" WB - Full Float								
605132-1	Standard	4.56	706033-4X	706182X	706041X	706702X	41100-1	41100-1
605132-2	Standard	4.10	706033-3X	706180X	706040X	706702X	41100-1	41100-1
1983 DRW G-Van 146" WB - Full Float								
605133-1	Standard	4.56	706033-4X	706182X	706041X	706702X	41100-1	41100-1
605133-2	Standard	4.10	706033-3X	706180X	706040X	706702X	41100-1	41100-1
1985-86 DRW G-Van 125" WB - Full Float								
605200-1	Standard	4.10	706033-3X	706180X	706040X	706702X	41100-1	41100-1
605200-2	Standard	4.56	706033-3X	706180X	706040X	706702X	41100-1	41100-1
1985-89 DRW G-Van 146" WB - Full Float								
605201-1	Standard	4.10	706033-3X	706180X	706040X	706702X	41100-1	41100-1
605201-2	Standard	4.56	706033-4X	706182X	706041X	706702X	41100-1	41100-1
1986-89 DRW G-Van 125" WB - Full Float								
605268-1	Standard	4.10	706033-3X	706180X	706040X	706702X	41100-1	41100-1
605268-2	Standard	4.56	706033-4X	706182X	706041X	706702X	41100-1	41100-1
1990 DRW G-Van 125" WB - Full Float								
605405-1	Standard	4.10	706033-3X	706180X	706040X	706702X	41100-1	41100-1
605405-2	Standard	4.56	706033-4X	706182X	706041X	706702X	41100-1	41100-1
1990 DRW G-Van 146" WB - Full Float								
605403-1	Standard	4.10	706033-3X	706180X	706040X	706702X	41100-1	41100-1
605403-2	Standard	4.56	706033-4X	706182X	706041X	706702X	41100-1	41100-1
1990 1/2-91 1/2 DRW G-Van 125" WB - Full Float								
605496-1	Standard	4.10	706033-3X	706180X	706040X	706702X	41100-1	41100-1
605496-2	Standard	4.56	706033-4X	706182X	706041X	706702X	41100-1	41100-1
1990 1/2-91 1/2 DRW G-Van 146" WB - Full Float								
605495-1	Standard	4.10	706033-3X	706180X	706040X	706702X	41100-1	41100-1
605495-2	Standard	4.56	706033-4X	706182X	706041X	706702X	41100-1	41100-1

(7) See Ring Gear & Pinion Kits in XGI Catalog for ratio & tooth combinations.

(8) See Differential Case Assy Kits in XGI Catalog for spline data & ratios.