

GM / Chevrolet 1979-1994

Model 70 /267 Rear Axles for

C-30

DRW G-Van, SRW G-Van

G-Van Extended

G-300

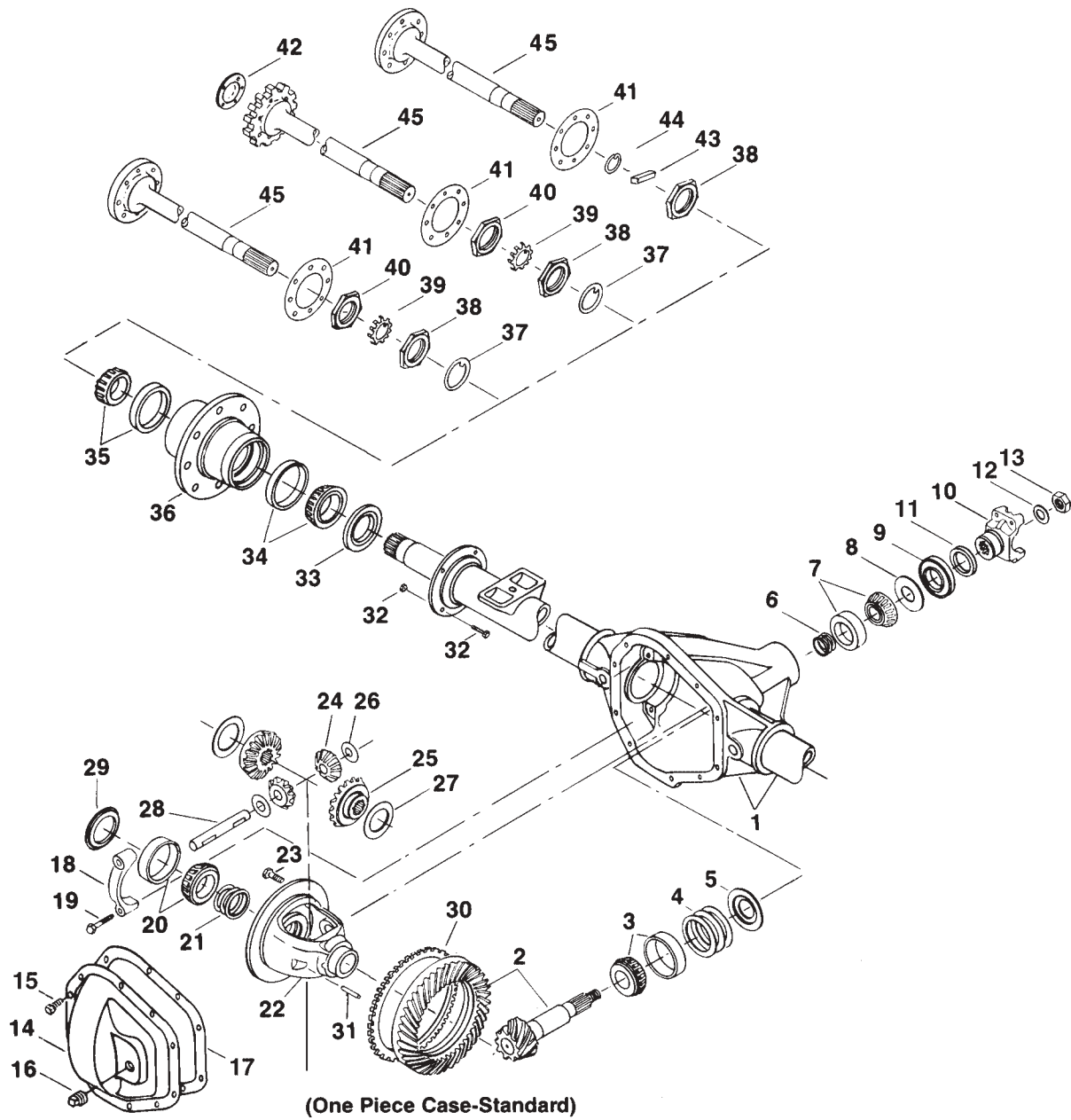
K-30

P-30, P-300

R-30

V-30

GM Model 70 /267 Rear Axles Exploded View



GM Model 70 /267 Rear Axles Parts Listing

ITEM NO.	PART NUMBER	DESCRIPTION	ITEM NO.	PART NUMBER	DESCRIPTION
1	— ⁽³⁾	Housing – Axle Service	20	— ⁽²⁾	KIT – Differential Bearing
2	— ⁽¹⁾	Drive Pinion & Gear Assembly	21	— ⁽²⁾	PKG – Diff Bearing Shim (inc 17)
3	— ⁽²⁾	KIT – Inner Pinion Bearing	22	— ⁽⁴⁾	Case – Differential (std)
4	—	Inner Pinion Bearing Shims (see shim packages)	23	— ⁽²⁾	Bolt – Drive Gear (qty 12)
	706357X	PKG – Pinion Bearing Shim (inc items 4, 6, 12, 13, 17)	24	35080	Pinion – Differential (std)
5	— ⁽²⁾	Baffle – Pinion Bearing	25	35079	Gear – Differential (std)
6	—	Outer Pinion Bearing Shims (see shim packages)	26	35082	Thrustwasher – Diff Pinion (std)
	— ⁽²⁾	PKG – Diff & Pinion Bearing Shim (inc items 4, 6, 12, 13, 17, 21)	27	34729	Thrustwasher – Diff Gear (std)
7	706045X	KIT – Outer Pinion Bearing	28	— ⁽²⁾	Shaft – Differential (std)
8	42737	Thrustwasher – Bearing	29	— ⁽²⁾	Spacer – Differential Bearing
9	42449	Seal – Pinion Oil	30	—	Tone Ring (ABS)
10	— ⁽²⁾	End Yoke Assembly (inc 11)	31	47024	Lock – Differential Shaft (std)
11	232752	Slinger – End Yoke	32	— ⁽³⁾	Nut/Bolt – Brake Mounting
12	30275	Washer – Pinion Nut	33	39693	Hub Seal
13	30271	Pinion Nut	34	— ⁽²⁾	KIT – Inner Wheel Bearing
	— ⁽²⁾	KIT – Carrier Cover (inc items 14, 15, 16)	35	— ⁽²⁾	KIT – Outer Wheel Bearing
14	— ⁽²⁾	Carrier Cover	36	— ⁽³⁾	Wheel Hub
15	34822	Bolt – Carrier Cover (qty 10)	37	— ⁽²⁾	Thrustwasher – Wheel Bearing
16	— ⁽²⁾	Plug – Carrier Cover	38	— ⁽²⁾	Spindle Nut
17	34687	Gasket – Carrier Cover	39	— ⁽²⁾	Lockwasher – Spindle Nut
18	— ⁽³⁾	Differential Bearing Cap	40	— ⁽²⁾	Spindle Nut
19	48632-1	Bolt – Differential Bearing Cap	41	— ⁽²⁾	Gasket
			42	— ⁽²⁾	Hub Cap
			43	— ⁽²⁾	Key – Square
			44	— ⁽²⁾	Snap Ring
			45	— ⁽¹⁾	Axle Shaft

- (1) See "Bill of Material Table" on next page
(2) See "Variable Parts Table" within this section
(3) Contact Vehicle Manufacturer
(4) Not Sold Separately

GM Model 70 /267 Rear Axles

Bill of Material Table

Axle			Axle Kits				Shaft & Joint Assy.	
Bill of Material	Diff. Type	Ratio	Ring Gear & Pinion Kit ⁽⁷⁾	Differential			Right Hand Shaft Assy.	Left Hand Shaft Assy.
				Case Assy. Kit ⁽⁸⁾	Case Kit	Inner Parts Kit		
1979 G-300 146" WB - 70B								
603703-1	Standard	4.10	706999-4X	706051X	706055X	706058X	41100-1	41100-1
603703-2	Standard	4.56	706999-6X	706052X	706056X	706058X	41100-1	41100-1
1979 C-30 Dual Wheel - 70HD								
603704-1	Standard	4.10	706999-4X	706064X	706068X	706058X	41100-1	41100-1
603704-2	Standard	4.56	706999-6X	706065X	706069X	706058X	41100-1	41100-1
603704-3	Standard	3.73	706999-2X	706064X	706068X	706058X	41100-1	41100-1
603704-4	Standard	4.56	706999-6X	706065X	706069X	706058X	41100-1	41100-1
603704-5	Standard	4.10	706999-4X	706064X	706068X	706058X	41100-1	41100-1
603704-6	No Spin	4.10	706999-4X	70716X	706185X	35683	41100-1	41100-1
1979 P-300 Motor Home - 70HD								
603929-1	Standard	4.56	706999-6X	706065X	706069X	706058X	36625-1	36625-1
603929-2	Standard	4.88	706999-8X	706065X	706069X	706058X	36625-1	36625-1
1979 P-300 UPS - 70HD								
603970-1	Standard	4.10	706999-4X	706064X	706068X	706058X	41100-1	41100-1
603987-1	Standard	4.10	706999-4X	706064X	706068X	706058X	41100-1	41100-1
1980-81 C-30 Dual Wheel - 70HD								
605003-1	Standard	4.10	706999-4X	706064X	706068X	706058X	41100-1	41100-1
605003-2	Standard	4.56	706999-6X	706065X	706069X	706058X	41100-1	41100-1
605003-3	Standard	3.73	706999-2X	706064X	706068X	706058X	41100-1	41100-1
605003-4	Standard	3.73	706999-2X	706064X	706068X	706058X	41100-1	41100-1
605003-5	Standard	4.10	706999-4X	706064X	706068X	706058X	41100-1	41100-1
605003-6	Standard	4.56	706999-6X	706065X	706069X	706058X	41100-1	41100-1
605003-7	Standard	4.10	706999-4X	706064X	706068X	706058X	41100-1	41100-1
605003-8	Standard	4.56	706999-6X	706065X	706069X	706058X	41100-1	41100-1
605003-9	Standard	3.73	706999-2X	706064X	706068X	706058X	41100-1	41100-1
605003-10	Standard	3.73	706999-2X	706064X	706068X	706058X	41100-1	41100-1
605003-11	Standard	4.10	706999-4X	706064X	706068X	706058X	41100-1	41100-1
605003-12	Standard	4.10	706999-6X	706065X	706069X	706058X	41100-1	41100-1
1980-81 P-300 Motor Home - 70HD								
605004-1	Standard	4.56	706999-6X	706065X	706069X	706058X	36625-1	36625-1
605004-2	Standard	4.88	706999-8X	706065X	706069X	706058X	36625-1	36625-1
605004-3	Standard	4.56	706999-6X	706065X	706069X	706058X	36625-1	36625-1
605004-4	Standard	4.88	706999-8X	706065X	706069X	706058X	36625-1	36625-1
1980-81 P-300 UPS - 70HD								
605005-1	Standard	4.10	706999-4X	706064X	706068X	706058X	41100-1	41100-1
605005-2	Standard	3.73	706999-2X	706064X	706068X	706058X	41100-1	41100-1
605005-3	Standard	3.73	706999-2X	706064X	706068X	706058X	41100-1	41100-1
605005-4	Standard	4.10	706999-4X	706064X	706068X	706058X	41100-1	41100-1
605005-5	Standard	3.73	706999-2X	706064X	706068X	706058X	41100-1	41100-1
605005-6	Standard	3.73	706999-2X	706064X	706068X	706058X	41100-1	41100-1
1980-81 P-300 Motor Home - 70HD								
605068-1	Standard	4.56	706999-6X	706065X	706069X	706058X	36625-1	36625-1
605068-2	Standard	4.88	706999-8X	706065X	706069X	706058X	36625-1	36625-1
605068-3	Standard	4.56	706999-6X	706065X	706069X	706058X	36625-1	36625-1
605068-4	Standard	4.88	706999-8X	706065X	706069X	706058X	36625-1	36625-1

(7) See Ring Gear & Pinion Kits in XGI Catalog for ratio & tooth combinations.

(8) See Differential Case Assy Kits in XGI Catalog for spline data & ratios.

GM Model 70 /267 Rear Axles

Bill of Material Table

Axle			Axle Kits				Shaft & Joint Assy.	
Bill of Material	Diff. Type	Ratio	Ring Gear & Pinion Kit ⁽⁷⁾	Differential			Right Hand Shaft Assy.	Left Hand Shaft Assy.
				Case Assy. Kit ⁽⁸⁾	Case Kit	Inner Parts Kit		
1980-82 G-300 146" WB - 70B								
605002-1	Standard	4.10	706999-4X	706051X	706055X	706058X	41100-1	41100-1
605002-2	Standard	4.56	706999-6X	706052X	706056X	706058X	41100-1	41100-1
605002-3	Standard	4.10	706999-4X	706051X	706055X	706058X	41100-1	41100-1
605002-4	Standard	4.56	706999-6X	706052X	706056X	706058X	41100-1	41100-1
605002-5	Standard	4.10	706999-4X	706051X	706055X	706058X	41100-1	41100-1
1981 1/2 P-300 UPS - 70HD								
605096-1	Standard	4.10	706999-4X	706064X	706068X	706058X	41100-1	41100-1
1982-84 C/K-30 - 70HD								
605099-1	Standard	3.73	706999-2X	706906X	706908X	706058X	41100-1	41100-1
605099-2	Standard	4.10	706999-4X	706906X	706908X	706058X	41100-1	41100-1
605099-3	Standard	4.56	706999-6X	706907X	706909X	706058X	41100-1	41100-1
1982 1/2-87 P-30 Motor Home/Disc Brakes - 70HD								
605117-1	Standard	4.56	706999-6X	706907X	706909X	706058X	36625-1	36625-1
605117-2	Standard	4.88	706999-8X	706907X	706909X	706058X	36625-1	36625-1
605117-3	Standard	5.86	706999-10X	706907X	706909X	706058X	36625-1	36625-1
605117-4	Standard	5.13	706999-9X	706907X	706909X	706058X	36625-1	36625-1
605117-5	Standard	4.56	706999-6X	706907X	706909X	706058X	36625-1	36625-1
605117-6	Standard	4.88	706999-8X	706907X	706909X	706058X	36625-1	36625-1
605117-7	Standard	5.13	706999-9X	706907X	706909X	706058X	36625-1	36625-1
1983 G-300 146" WB - 70B								
605134-1	Standard	4.56	706999-6X	706951X	706953X	706058X	41100-1	41100-1
605134-2	Standard	4.10	706999-4X	706950X	706952X	706058X	41100-1	41100-1
1984-86 C/K-30 & R/V-30 - 70HD								
605203-1	Standard	3.73	706999-2X	706906X	706908X	706058X	41100-1	41100-1
605203-2	Standard	4.10	706999-4X	706906X	706908X	706058X	41100-1	41100-1
605203-3	Standard	4.56	706999-6X	706907X	706909X	706058X	41100-1	41100-1
1984-89 DRW G-Van 146" WB - 70U								
605202-1	Standard	4.10	706998-3X	706950X	706952X	706058X	41100-1	41100-1
605202-2	Standard	4.56	706998-4X	706951X	706953X	706058X	41100-1	41100-1
1985-89 P-300 UPS - 70HD								
605043-1	Standard	4.10	706999-4X	706906X	706908X	706058X	41100-1	41100-1
605043-2	Standard	4.10	706999-4X	706906X	706908X	706058X	41100-1	41100-1
605043-3	Standard	4.56	706999-6X	706907X	706909X	706058X	41100-1	41100-1
1987 SRW C-30 - 70-3HD								
605305-1	Standard	3.21	707055-1X	706065X	706069X	706058X	41100-2	41100-3
605305-3	Standard	3.42	707055-2X	706065X	706069X	706058X	41100-2	41100-3
605305-5	Standard	3.73	706999-3X	707054X	707056X	706058X	41100-2	41100-3
605305-7	Standard	4.10	706999-4X	707054X	707056X	706058X	41100-2	41100-3
1987-91 1/2 R/V-30 - 70HD								
605331-1	Standard	3.73	706999-2X	706906X	706908X	706058X	41100-1	41100-1
605331-2	Standard	4.10	706999-4X	706906X	706908X	706058X	41100-1	41100-1
605331-3	Standard	4.56	706999-6X	706907X	706909X	706058X	41100-1	41100-1
1987 1/2-89 SRW C-30 - 70-3HD								
605345-3	Standard	3.42	707055-2X	706065X	706069X	706058X	41100-2	41100-3
605345-5	Standard	3.73	706999-3X	707054X	707056X	706058X	41100-2	41100-3
605345-7	Standard	4.10	706999-4X	707054X	707056X	706058X	41100-2	41100-3

(7) See Ring Gear & Pinion Kits in XGI Catalog for ratio & tooth combinations.

(8) See Differential Case Assy Kits in XGI Catalog for spline data & ratios.

GM Model 70 /267 Rear Axles

Bill of Material Table

Axle			Axle Kits				Shaft & Joint Assy.	
Bill of Material	Diff. Type	Ratio	Ring Gear & Pinion Kit ⁽⁷⁾	Differential			Right Hand Shaft Assy.	Left Hand Shaft Assy.
				Case Assy. Kit ⁽⁸⁾	Case Kit	Inner Parts Kit		
1987 1/2-89 SRW K-30 - 70-3HD								
605346-1	Standard	3.42	707055-2X	706065X	706069X	706058X	41100-2	41100-3
605346-3	Standard	3.73	706999-3X	707054X	707056X	706058X	41100-2	41100-3
605346-5	Standard	4.10	706999-4X	707054X	707056X	706058X	41100-2	41100-3
1988 P-30 Motor Home/Disc Brakes - 70HD								
605361-1	Standard	3.73	706999-2X	706906X	706908X	706058X	41100-1	41100-1
605361-2	Standard	4.10	706999-4X	706906X	706908X	706058X	41100-1	41100-1
605361-3	Standard	4.56	706999-6X	706907X	706909X	706058X	41100-1	41100-1
1988-89 DRW G-Van 30 - 70-3HD								
605310-5	Standard	3.73	706999-3X	707054X	707056X	706058X	41100-1	41100-1
605310-7	Standard	4.10	706999-4X	707054X	707056X	706058X	41100-1	41100-1
1988-89 P-30 Motor Home/Disc Brakes - 70HD								
605363-5	Standard	4.56	706999-6X	706907X	706909X	706058X	36625-1	36625-1
605363-6	Standard	4.88	706999-8X	706907X	706909X	706058X	36625-1	36625-1
605363-7	Standard	5.13	706999-9X	706907X	706909X	706058X	36625-1	36625-1
605391-1	Standard	4.56	706999-6X	706907X	706909X	706058X	36625-1	36625-1
605391-2	Standard	4.88	706999-8X	706907X	706909X	706058X	36625-1	36625-1
1988-89 DRW C/K-30 - 70-3HD								
605397-5	Standard	3.73	706999-3X	707054X	707056X	706058X	41100-4	41100-5
605397-7	Standard	4.10	706999-4X	707054X	707056X	706058X	41100-4	41100-5
605397-9	Standard	4.56	707055-3X	707054X	707056X	706058X	41100-4	41100-5
1988-90 SRW G-Van 30 - 70-3HD								
605302-3	Standard	3.42	707055-2X	706065X	706069X	706058X	41100-6	41100-7
605302-4	Ltd Slip	3.42	707055-2X	Eaton L/S	Eaton L/S	Eaton L/S	41100-6	41100-7
605302-5	Standard	3.73	706999-3X	707054X	707056X	706058X	41100-6	41100-7
605302-6	Ltd Slip	3.73	706999-3X	Eaton L/S	Eaton L/S	Eaton L/S	41100-6	41100-7
605302-7	Standard	4.10	706999-4X	707054X	707056X	706058X	41100-6	41100-7
605302-8	Ltd Slip	4.10	706999-4X	Eaton L/S	Eaton L/S	Eaton L/S	41100-6	41100-7
1989 1/2 P-300 UPS - 70HD								
605415-1	Standard	4.56	706999-6X	707118X	706909X	707119X	41100-1	41100-1
1989 1/2 G-Van Extended - 70-3HD								
605418-3	Standard	3.42	707055-2X	706065X	706069X	706058X	41100-6	41100-7
605418-5	Standard	3.73	706999-3X	707054X	707056X	706058X	41100-6	41100-7
1989 1/2-90 P-30 Motor Home/Disc Brakes - 70HD								
605456-5	Standard	4.56	706999-6X	706907X	706909X	706058X	36625-1	36625-1
605456-6	Standard	4.88	706999-8X	706907X	706909X	706058X	36625-1	36625-1
605456-7	Standard	5.13	706999-9X	706907X	706909X	706058X	36625-1	36625-1
605457-1	Standard	4.56	706999-6X	706907X	706909X	706058X	36625-1	36625-1
605457-2	Standard	4.88	706999-8X	706907X	706909X	706058X	36625-1	36625-1
1990 DRW G-Van 146" WB - 70U								
605452-1	Standard	4.10	706998-3X	707139X	707140X	706058X	41100-1	41100-1
605452-2	Standard	4.56	706998-4X	707176X	707177X	706058X	41100-1	41100-1
1990 DRW G-Van 30 - 70-3HD								
605453-5	Standard	3.73	706999-3X	707054X	707056X	706058X	41100-1	41100-1
605453-7	Standard	4.10	706999-4X	707054X	707056X	706058X	41100-1	41100-1
1990 P-300 UPS - 70HD								
605470-1	Standard	4.56	706999-6X	707118X	706909X	707119X	41100-1	41100-1

(7) See Ring Gear & Pinion Kits in XGI Catalog for ratio & tooth combinations.

(8) See Differential Case Assy Kits in XGI Catalog for spline data & ratios.

GM Model 70 /267 Rear Axles

Bill of Material Table

Axle			Axle Kits				Shaft & Joint Assy.	
Bill of Material	Diff. Type	Ratio	Ring Gear & Pinion Kit ⁽⁷⁾	Differential			Right Hand Shaft Assy.	Left Hand Shaft Assy.
				Case Assy. Kit ⁽⁸⁾	Case Kit	Inner Parts Kit		
1990-91 1/2 SRW G-Van 30 - 70-3HD								
605449-3	Standard	3.42	707055-2X	706065X	706069X	706058X	41100-6	41100-7
605449-5	Standard	3.73	706999-3X	707054X	707056X	706058X	41100-6	41100-7
605449-7	Standard	4.10	706999-4X	707054X	707056X	706058X	41100-6	41100-7
1990-91 1/2 G-Van Extended - 70-3HD								
605454-3	Standard	3.42	707055-2X	706065X	706069X	706058X	41100-6	41100-7
605454-5	Standard	3.73	706999-3X	707054X	707056X	706058X	41100-6	41100-7
1990 1/2-91 1/2 DRW G-Van 146" WB - 70U								
605497-1	Standard	4.10	706998-3X	707139X	707140X	706058X	41100-1	41100-1
605497-2	Standard	4.56	706998-4X	707176X	707177X	706058X	41100-1	41100-1
1990 1/2-91 1/2 DRW G-Van 30 - 70-3HD								
605498-5	Standard	3.73	706999-3X	707054X	707056X	706058X	41100-1	41100-1
605498-7	Standard	4.10	706999-4X	707054X	707056X	706058X	41100-1	41100-1
1990 1/2-92 1/2 P-300 UPS - 70HD								
605493-1	Standard	4.56	706999-6X	707118X	706909X	707119X	41100-1	41100-1
1991-93 1/2 70HD								
605494-1	No Spin	4.56	706999-6X	44042	-	-	41100-1	41100-1
1993-94 P-300 UPS - 70HD								
605559-1	Standard	4.56	706999-6X	707118X	706909X	707119X	41100-1	41100-1

(7) See Ring Gear & Pinion Kits in XGI Catalog for ratio & tooth combinations.

(8) See Differential Case Assy Kits in XGI Catalog for spline data & ratios.

GM Model 70 /267 Rear Axles Variable Parts Listing

Kits & Parts - Use With All Applications							
Description & Item Number (Refer to "Exploded View" at the front of this section)			Bills of Material				
			603703	603704	603929	603970 603987	605002
1	KIT – Inner Pinion Bearing	3	706060X	706060X	706060X	706060X	706060X
2	Baffle – Pinion Bearing	5	34849	34849	34849	34849	34849
3	PKG – Diff & Pinion Bearing Shim	-	706213X	706077X	706077X	706213X	706213X
4	End Yoke Assembly (inc 11)	10	3-4-5731-1X	3-4-5731-1X	3-4-5711-1X	3-4-5711-1X	3-4-5731X
5	KIT – Carrier Cover	-	707104X	706059X	706059X	706059X	707104X
6	Carrier Cover	14	42815-2	34055	34055	34055	42815-2
7	Plug – Carrier Cover	16	43180	36472	36472	36472	43180
8	KIT – Differential Bearing	20	706047X	706070X	706070X	706070X	706047X
9	PKG – Diff Bearing Shim (inc 17)	21	706378X	706373X	706373X	706378X	706378X
10	Bolt – Drive Gear (qty 12)	23	30266	30266	30266	30266	30266
11	Shaft – Differential (std)	28	35081	35081	35081	35081	35081
12	Spacer – Differential Bearing	29	—	—	34848-28	—	—
13	KIT – Inner Wheel Bearing	34	706179X	706179X	—	706179X	706179X
14	KIT – Outer Wheel Bearing	35	706074X	706074X	—	706074X	706074X
15	Thrustwasher – Wheel Bearing	37	33734	33734	36637	33734	—
16	Spindle Nut	38	33732	33732	36635	33732	39521
17	Lockwasher – Spindle Nut	39	33733	33733	36636	33733	—
18	Spindle Nut	40	33732	33732	36635	33732	—
19	Gasket	41	36554	36554	36633	36554	36554
20	Hub Cap	42	—	—	36632	—	—
21	Key – Square	43	—	—	—	—	39522
22	Snap Ring	44	—	—	—	—	39523
			605003	605004	605005	605043	605068
1	KIT – Inner Pinion Bearing	3	706060X	706060X	706060X	706060X	706060X
2	Baffle – Pinion Bearing	5	34849	34849	34849	34849	34849
3	PKG – Diff & Pinion Bearing Shim	-	706077X	706077X	706077X	706213X	706077X
4	End Yoke Assembly (inc 11)	10	3-4-5731-1X	3-4-5711-1X	3-4-5731-1X	3-4-5711-1X	3-4-5711-1X
5	KIT – Carrier Cover	-	706059X	706059X	706059X	706966X	706059X
6	Carrier Cover	14	34055	34055	34055	30809	34055
7	Plug – Carrier Cover	16	36472	36472	36472	36472	36472
8	KIT – Differential Bearing	20	706070X	706070X	706070X	706070X	706070X
9	PKG – Diff Bearing Shim (inc 17)	21	706373X	706373X	706373X	706378X	706373X
10	Bolt – Drive Gear (qty 12)	23	30266	30266	30266	40638	30266
11	Shaft – Differential (std)	28	35081	35081	35081	35081	35081
12	Spacer – Differential Bearing	29	—	34848-28	—	—	34848-28
13	KIT – Inner Wheel Bearing	34	706179X	—	706179X	706179X	—
14	KIT – Outer Wheel Bearing	35	706074X	—	706074X	706074X	—
15	Thrustwasher – Wheel Bearing	37	—	36637	—	—	36637
16	Spindle Nut	38	39521	36635	39521	39521	36635
17	Lockwasher – Spindle Nut	39	—	36636	—	—	36636
18	Spindle Nut	40	—	36635	—	—	36635
19	Gasket	41	36554	36633	36554	36554	—
20	Hub Cap	42	—	36632	—	—	36632
21	Key – Square	43	39522	—	39522	39522	—
22	Snap Ring	44	39523	—	39523	39523	—

GM Model 70 /267 Rear Axles Variable Parts Listing

Kits & Parts - Use With All Applications							
Description & Item Number (Refer to "Exploded View" at the front of this section)			Bills of Material				
			605096	605099	605117	605134	605202
1	KIT – Inner Pinion Bearing	3	706060X	706060X	706060X	706060X	706861X
2	Baffle – Pinion Bearing	5	34849	34849	34849	34849	41550
3	PKG – Diff & Pinion Bearing Shim	-	706077X	706213X	706213X	706213X	706213X
4	End Yoke Assembly (inc 11)	10	3-4-5731-1X	3-4-5731-1X	3-4-5711X	3-4-5731-1X	3-4-5731-1X
5	KIT – Carrier Cover	-	706059X	706966X	707102X	707104X	707104X
6	Carrier Cover	14	34055	30809	42815-1	42815-2	42815-2
7	Plug – Carrier Cover	16	36472	36472	43180	43180	43180
8	KIT – Differential Bearing	20	706070X	706070X	706070X	706047X	706047X
9	PKG – Diff Bearing Shim (inc 17)	21	706373X	706378X	706378X	706378X	706378X
10	Bolt – Drive Gear (qty 12)	23	30266	40638	40638	40638	40638
11	Shaft – Differential (std)	28	35081	46640	35081	35081	35081
12	Spacer – Differential Bearing	29	—	—	—	—	—
13	KIT – Inner Wheel Bearing	34	706179X	706179X	—	706179X	706179X
14	KIT – Outer Wheel Bearing	35	706074X	706074X	—	706074X	706074X
15	Thrustwasher – Wheel Bearing	37	—	—	36637	—	—
16	Spindle Nut	38	39521	39521	36635	39521	39521
17	Lockwasher – Spindle Nut	39	—	—	36636	—	—
18	Spindle Nut	40	—	—	36635	—	—
19	Gasket	41	36554	36554	—	36554	36554
20	Hub Cap	42	—	—	36632	—	—
21	Key – Square	43	39522	39522	—	39522	39522
22	Snap Ring	44	39523	39523	—	39523	39523
			605203	605302	605305	605310	605331
1	KIT – Inner Pinion Bearing	3	706060X	706060X	706060X	706060X	706060X
2	Baffle – Pinion Bearing	5	34849	34849	34849	34849	34849
3	PKG – Diff & Pinion Bearing Shim	-	706077X	706213X	706213X	706213X	706213X
4	End Yoke Assembly (inc 11)	10	3-4-5731-1X	3-4-5731-1X	3-4-5731-1X	3-4-5731-1X	3-4-5731-1X
5	KIT – Carrier Cover	-	706966X	707104X	707104X	707104X	706966X
6	Carrier Cover	14	30809	42815-2	42815-2	42815-2	30809
7	Plug – Carrier Cover	16	36472	43180	43180	43180	36472
8	KIT – Differential Bearing	20	706070X	706070X	706070X	706070X	706070X
9	PKG – Diff Bearing Shim (inc 17)	21	706373X	706378X	706378X	706378X	706378X
10	Bolt – Drive Gear (qty 12)	23	40638	30266	30266	30266	40638
11	Shaft – Differential (std)	28	35081	35081	46640	35081	35081
12	Spacer – Differential Bearing	29	—	34848-28	—	34848-28	—
13	KIT – Inner Wheel Bearing	34	706179X	706179X	706179X	706179X	706179X
14	KIT – Outer Wheel Bearing	35	706074X	706074X	706074X	706074X	706074X
15	Thrustwasher – Wheel Bearing	37	—	—	—	—	—
16	Spindle Nut	38	39521	39521	39521	39521	39521
17	Lockwasher – Spindle Nut	39	—	—	—	—	—
18	Spindle Nut	40	—	—	—	—	—
19	Gasket	41	36554	36554	36554	36554	36554
20	Hub Cap	42	—	—	—	—	—
21	Key – Square	43	39522	39522	39522	39522	39522
22	Snap Ring	44	39523	39523	39523	39523	39523

(See next page for additional bills of material)

GM Model 70 /267 Rear Axles Variable Parts Listing

Kits & Parts - Use With All Applications							
Description & Item Number (Refer to "Exploded View" at the front of this section)			Bills of Material				
			605345 605346	605361	605363 605391	605397	605415
1	KIT – Inner Pinion Bearing	3	706060X	706060X	706060X	706060X	706060X
2	Baffle – Pinion Bearing	5	34849	34849	34849	34849	34849
3	PKG – Diff & Pinion Bearing Shim	-	706213X	706213X	706213X	706213X	706077X
4	End Yoke Assembly (inc 11)	10	3-4-5731-1X	3-4-5731-1X	3-4-5711-1X	3-4-5731-1X	3-4-5711-1X
5	KIT – Carrier Cover	-	707104X	707102X	707102X	707104X	707102X
6	Carrier Cover	14	42815-2	42815-1	42815-1	42815-2	42815-1
7	Plug – Carrier Cover	16	43180	43180	43180	43180	43180
8	KIT – Differential Bearing	20	706070X	706070X	706070X	706070X	706070X
9	PKG – Diff Bearing Shim (inc 17)	21	706378X	706378X	706378X	706378X	706373X
10	Bolt – Drive Gear (qty 12)	23	30266	40638	40638	30266	40638
11	Shaft – Differential (std)	28	35081	35081	35081	35081	43404
12	Spacer – Differential Bearing	29	34848-28	—	—	34848-28	—
13	KIT – Inner Wheel Bearing	34	706179X	706179X	—	706179X	706179X
14	KIT – Outer Wheel Bearing	35	706074X	706074X	—	706074X	706074X
15	Thrustwasher – Wheel Bearing	37	—	—	36637	—	—
16	Spindle Nut	38	39521	39521	36635	39521	39521
17	Lockwasher – Spindle Nut	39	—	—	36636	—	—
18	Spindle Nut	40	—	—	36635	—	—
19	Gasket	41	36554	36554	—	36554	36554
20	Hub Cap	42	—	—	36632	—	—
21	Key – Square	43	39522	39522	—	39522	39522
22	Snap Ring	44	39523	39523	—	39523	39523
			605418 605449	605452	605453 605454	605456 506457	605470
1	KIT – Inner Pinion Bearing	3	706060X	706060X	706060X	706060X	706060X
2	Baffle – Pinion Bearing	5	34849	41550	34849	34849	34849
3	PKG – Diff & Pinion Bearing Shim	-	706213X	706213X	706213X	706213X	706213X
4	End Yoke Assembly (inc 11)	10	3-4-5731-1X	3-4-5731-1X	3-4-5731-1X	3-4-5711-1X	3-4-5711-1X
5	KIT – Carrier Cover	-	707104X	707104X	707104X	707102X	707102X
6	Carrier Cover	14	42815-2	42815-2	42815-2	42815-1	42815-1
7	Plug – Carrier Cover	16	43180	43180	43180	43180	43180
8	KIT – Differential Bearing	20	706070X	706047X	706070X	706070X	706070X
9	PKG – Diff Bearing Shim (inc 17)	21	706378X	706378X	706378X	706378X	706378X
10	Bolt – Drive Gear (qty 12)	23	30266	40638	30266	40638	40638
11	Shaft – Differential (std)	28	35081	35081	35081	35081	43404
12	Spacer – Differential Bearing	29	34848-28	42563	34848-28	—	—
13	KIT – Inner Wheel Bearing	34	706179X	706179X	706179X	—	706179X
14	KIT – Outer Wheel Bearing	35	706074X	706074X	706074X	—	706074X
15	Thrustwasher – Wheel Bearing	37	—	—	—	36637	—
16	Spindle Nut	38	39521	39521	39521	36635	39521
17	Lockwasher – Spindle Nut	39	—	—	—	36636	—
18	Spindle Nut	40	—	—	—	36635	—
19	Gasket	41	36554	36554	36554	—	36554
20	Hub Cap	42	—	—	—	36632	—
21	Key – Square	43	39522	39522	36522	—	39522
22	Snap Ring	44	39523	39523	39523	—	39523

GM Model 70 /267 Rear Axles Variable Parts Listing

Kits & Parts - Use With All Applications							
Description & Item Number (Refer to "Exploded View" at the front of this section)			Bills of Material				
			605559	605493	605494	605497	605498
1	KIT – Inner Pinion Bearing	3	706060X	706060X	706060X	706861X	706060X
2	Baffle – Pinion Bearing	5	34849	34849	34849	34849	41550
3	PKG – Diff & Pinion Bearing Shim	-	706213X	706213X	706213X	706213X	706213X
4	End Yoke Assembly (inc 11)	10	3-4-5711-1X	3-4-5711-1X	3-4-5731-1X	3-4-5731-1X	3-4-5731-1X
5	KIT – Carrier Cover	-	707102X	707102X	706966X	707104X	707104X
6	Carrier Cover	14	42815-1	42815-1	30809	42815-2	42815-2
7	Plug – Carrier Cover	16	43180	43180	36472	43180	43180
8	KIT – Differential Bearing	20	706070X	706070X	706070X	706047X	706070X
9	PKG – Diff Bearing Shim (inc 17)	21	706378X	706378X	706378X	706378X	706378X
10	Bolt – Drive Gear (qty 12)	23	40638	40638	40638	40638	30266
11	Shaft – Differential (std)	28	43404	43404	—	35081	35081
12	Spacer – Differential Bearing	29	—	—	—	42563	34848-28
13	KIT – Inner Wheel Bearing	34	—	706179X	706179X	706179X	706179X
14	KIT – Outer Wheel Bearing	35	—	706074X	706074X	706074X	706074X
15	Thrustwasher – Wheel Bearing	37	—	—	—	—	—
16	Spindle Nut	38	39521	39521	39521	39521	39521
17	Lockwasher – Spindle Nut	39	—	—	—	—	—
18	Spindle Nut	40	—	—	—	—	—
19	Gasket	41	36554	36554	36554	36554	36554
20	Hub Cap	42	—	—	—	—	—
21	Key – Square	43	39522	39522	39522	39522	39522
22	Snap Ring	44	39523	39523	39523	39523	39523