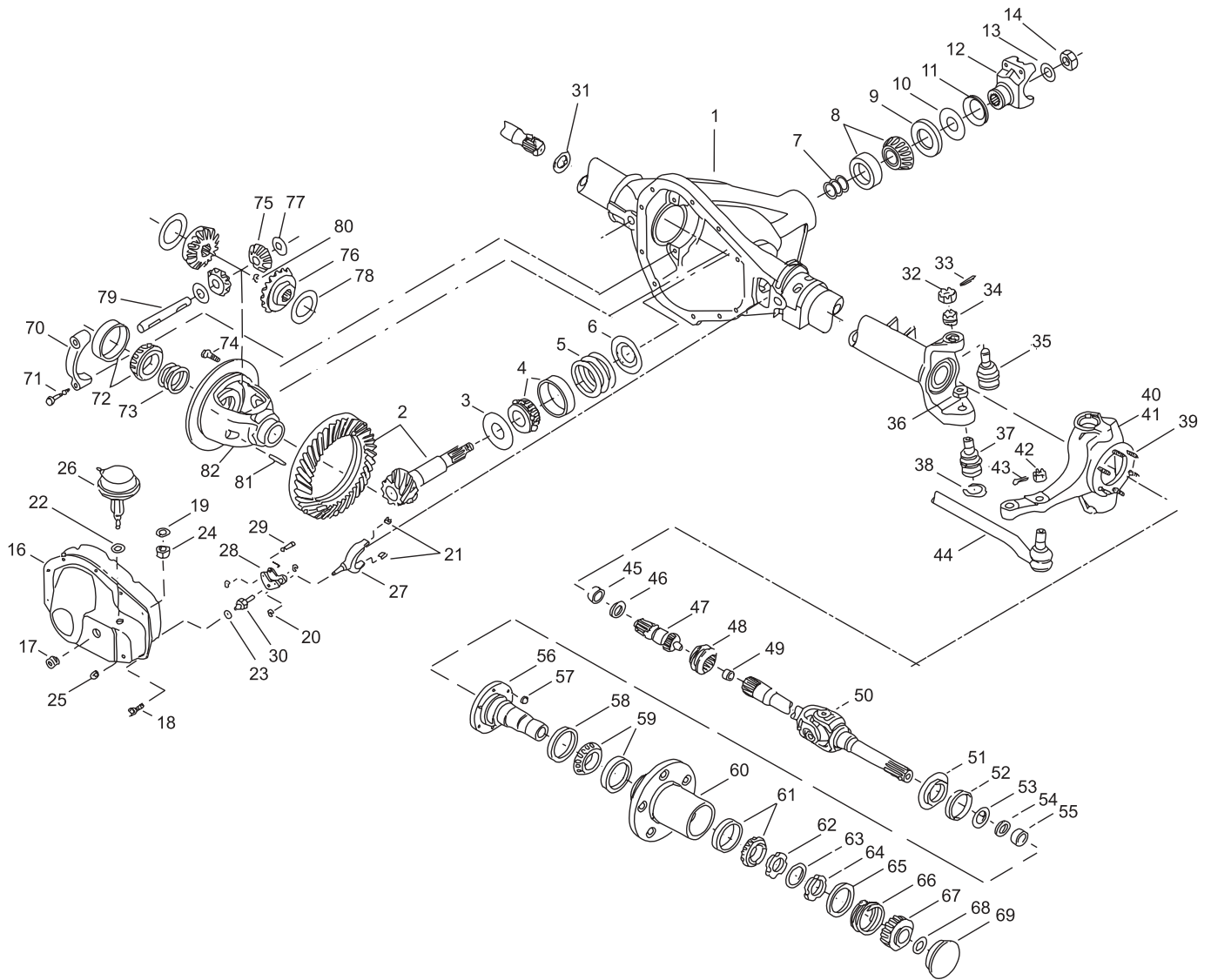


Jeep / Eagle 1982-1984

**Model 44 /216 Disconnect
Front Axles for**

**J10, J20,
Cherokee,
Wagoneer**

Jeep 44 /216 Disconnect Front Axles Exploded View



Jeep 44 /216 Disconnect Front Axles Parts Listing

ITEM NO.	PART NUMBER	DESCRIPTION	ITEM NO.	PART NUMBER	DESCRIPTION
1	— ⁽³⁾	Housing – Axle Service	38	35928	Snap Ring
2	— ⁽¹⁾	Drive Pinion & Gear Assembly	39	36326-2	Bolt – Hex
3	30764	Slinger – Inner Pinion Bearing	40	38532	Right Knuckle
4	706031X	KIT – Inner Pinion Bearing	41	38534	Left Knuckle
	706376X	PKG – Diff & Pinion Bearing Shim (inc items 5, 7, 13, 14, 73)	42	— ⁽³⁾	Nut – Hex Slotted
	706358X	PKG – Pinion Bearing Shim (inc items 5, 7, 13, 14)	43	— ⁽³⁾	Cotter Pin
			44	— ⁽⁵⁾	Tie Rod Assembly
5	—	Inner Pinion Bearing Shims (see shim packages)	45	565983	Bearing
			46	40191	Seal
6	30765	Baffle – Pinion Bearing	47	40173	Shaft – Output
7	—	Outer Pinion Bearing Shims (see shim packages)	48	42998	Collar – Clutch
			49	565985	Bearing
8	706030X	KIT – Outer Pinion Bearing	50	— ⁽¹⁾	Shaft & Joint Assembly
9	13575	Slinger – Outer Pinion Bearing	51	36364	Slinger – Spindle Yoke
10	39118	Seal – Pinion Oil		706527X	KIT – Spindle Seal & Bearing (52-55)
11	41498	Slinger – End Yoke		706570X	KIT – Spindle (non-disco side) (inc items 52, 53, 54, 55, 56)
12	2-4-8091-1X	End Yoke Assembly (inc 11)		707013X	KIT – Spindle (disco side) (inc items 52, 53, 54, 55, 56)
13	30186	Washer – Pinion Nut			
14	30185	Pinion Nut	52	38128	Oil Seal
	707008X	KIT – Carrier Cover (inc 16-25)	53	38106	Spacer – Wheel Bearing Spindle
	707005X	KIT – Small Parts (inc 18-25 & RTV)	54	36361	Oil Seal (block vee)
	707006X	KIT – Motor Assy' (inc 18-26 & RTV)	55	550759	Needle Bearing (non-disco side)
	707007X	KIT – Shift Fork (inc 18-25 & 27-30)		40608	Retainer – Oil Seal (disco side)
16	40189	Carrier Cover	56	38428	Spindle – Wheel Bearing
17	36918	Plug – Carrier Cover	57	35704	Nut – Brake Mounting
18	34279	Bolt – Carrier Cover (qty 10)	58	36366	Oil Seal
19	500360-15	Lockwasher	59	706074X	KIT – Inner Wheel Bearing
20	40182	Snap Rings	60	— ⁽³⁾	Hub and Rotor Assembly
21	621059	Clip – Shift Fork	61	706111X	KIT – Outer Wheel Bearing
22	40701	Gasket	62	21588X	Nut & Pin Assembly – Inner Lock
23	40691	Gasket	63	36569	Lock Nut
24	40187	Nut – Hex	64	31139	Nut – Wheel Bearing Adjusting
25	40184	Nut – Hex	65	32589	Plate – Spring Retaining
26	40732	Motor Assembly	66	35218	Spring – Pressure
27	40177	Shift Fork Assembly	67	42667	Gear – Axle Drive
28	40178	Lever and Sleeve Assembly	68	31624	Snap Ring
29	40190	Pin – Grooved	69	31552	Hub Cap
30	40180	Stud – Linkage	70	— ⁽³⁾	Differential Bearing Cap
31	— ⁽²⁾	Seal/Guide Tube (non-disco side)	71	48632-1	Bolt – Differential Bearing Cap
	706575X	KIT – Right Knuckle Assembly (inc 32,33,34,35,36,37,38,39,40)	72	706032X	KIT – Differential Bearing
	706576X	KIT – Left Knuckle Assembly (inc 32,33,34,35,36,37,38,39,41)	73	706086X	PKG – Differential Bearing Shim
	706116X	KIT – Socket Assembly (inc 32-38)	74	30187	Bolt – Drive Gear (qty 10)
32	35416	Nut – Hex Slotted	75	17717	Pinion – Differential
33	500024-6	Cotter Pin	76	40194	Gear – Differential
34	35417	Adjusting Split Ring	77	13338-3	Thrustwasher – Differential Pinion
35	40112	Socket Assembly	78	40196	Thrustwasher – Differential Gear
36	35566	Nut – Hex Jam	79	39194	Shaft – Differential
37	40113	Socket Assembly	80	42570	Snap Ring
			81	13449	Lock – Differential Shaft
			82	— ⁽⁴⁾	Case – Differential

(1) See "Bill of Material Table" on next page

(2) See "Variable Parts Table" within this section

(3) Contact Vehicle Manufacturer

(4) Not Sold Separately

(5) See Spicer Chassis Catalog for part number and additional steering parts

Jeep 44 /216 Disconnect Front Axles Bill of Material Table

Axle			Axle Kits				Shaft & Joint Assy.	
Bill of Material	Diff. Type	Ratio	Ring Gear & Pinion Kit ⁽⁷⁾	Differential			Right Hand Shaft Assy.	Left Hand Shaft Assy.
				Case Assy. Kit ⁽⁸⁾	Case Kit	Inner Parts Kit		
1982-84 Wagoneer, Cherokee Disconnect STD Track								
610157-2	Standard	3.31	706017-2X	706857X	706858X	706859X	660091-9	71557-1X
610157-5	Standard	2.72	706017-19X	706857X	706858X	706859X	660091-9	71557-1X
1982-84 J10, J20, Wide Track Cherokee								
610158-3	Standard	3.31	706017-2X	706857X	706858X	706859X	72801-4X	71557-2X
610158-8	Standard	2.72	706017-19X	706857X	706858X	706859X	72801-4X	71557-2X

NOTE: All Ring & Pinion Kits with base number 706930 are reverse spiral bevel.

(7) See Ring Gear & Pinion Kits in XGI Catalog for ratio & tooth combinations.

(8) See Differential Case Assy Kits in XGI Catalog for spline data & ratios.

(9) Differential Case has unequal journal diameters.

Variable Parts Listing

Kits & Parts - Use With All Applications						
Description & Item Number (Refer to "Exploded View")			Bills of Material			
			610157	610158		
1	Seal/Guide Tube (non-disco side)	31	620257	620216		